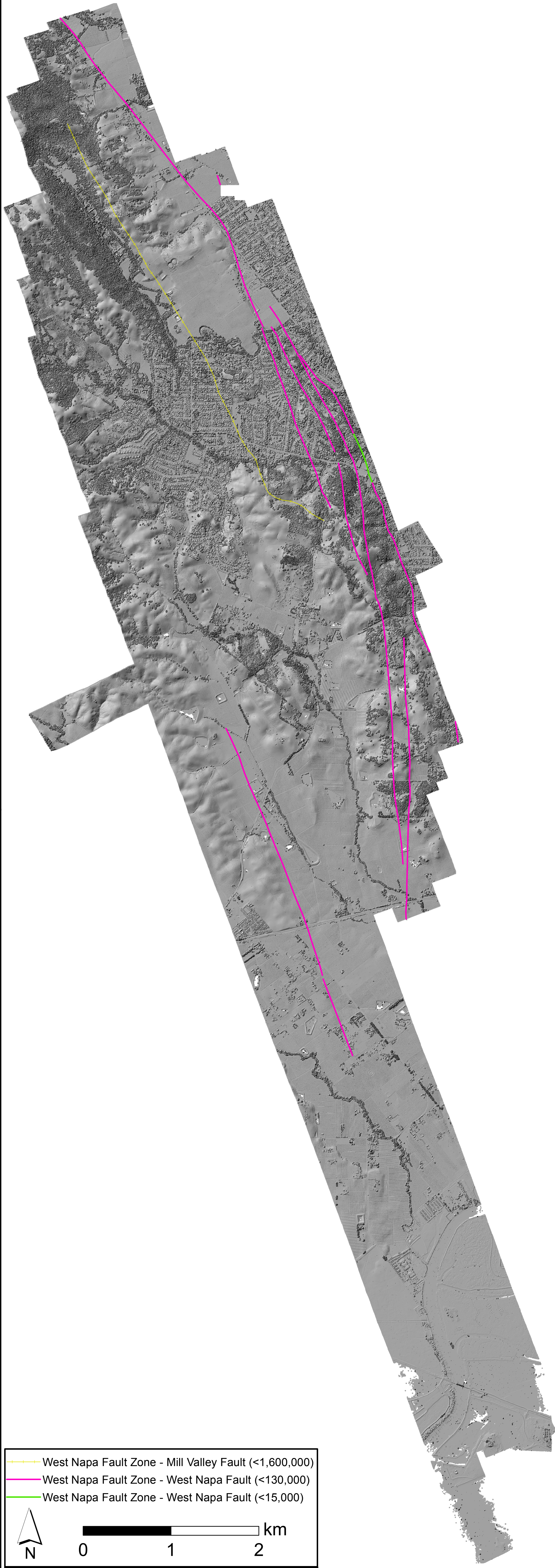


South Napa Earthquake



- West Napa Fault Zone - Mill Valley Fault (<1,600,000)
- West Napa Fault Zone - West Napa Fault (<130,000)
- West Napa Fault Zone - West Napa Fault (<15,000)



Data Acknowledgements:
Data collection was funded by the California Department of Water Resources, the US Geological Survey, the California Geological Survey, and PEER-GEER.

This material is based on data and processing services provided by the OpenTopography Facility with support from the National Science Foundation under NSF Award Numbers 0930731 & 0930643

Fault data provided by:
U.S. Geological Survey, 2006, Quaternary fault and fold database for the United States, accessed July 10, 2014, from USGS web site: <http://earthquake.usgs.gov/hazards/qfaults/>

Ground Returns

